

ULTIMATE SUPPORT®

SECOND TIER FOR IQ-X-1000 AND IQ-X-2000 KEYBOARD STANDS – IQ-X-200

The IQ-X-200 is a foldable second tier solution designed for your IQ-X-1000 or IQ-X-2000 X style Keyboard Stand from ultimate Support. After a performance, your IQ-X-200 folds down and travels with the rest of your IQ-X-1000 or IQ-X-2000. The IQ-X-200 features three height settings, allowing you to adjust your second tier to fit your needs, and can angle inward to support smaller controller. If all of this sounds great to you, but you don't have an IQ-X stand, it still might work for you. Thanks to an adjustable attachment that can fit between .788-1" diameter, the IQ-X-200 will fit a number of other stands as well!



IQ-X-200 KEY FEATURES



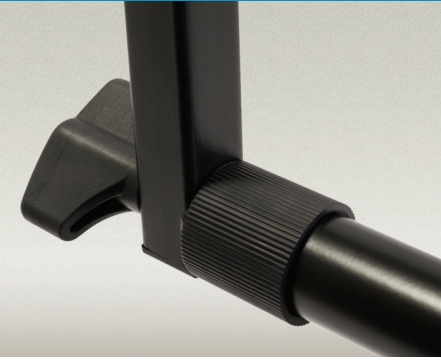
ANGLE INWARD FOR SMALLER CONTROLLERS

Thanks to the functionality of the IQ-X-200, you can confidently set your second tier at the angle that suits your needs.



HEIGHT ADJUSTABLE

The IQ-X 200 provides three height settings, so you can dial in your setup for your perfect placement.



UNIVERSAL ATTACHMENT

The IQ-X-200 can be adjusted to fit any tubing .788-1" in diameter.



FOLDS UP WITH STANDS

Folds down and travels with the rest of your IQ-X-1000 or IQ-X-2000.



IQ-X-200 SPECS

- Part Name: IQ-X-200
- Part Number: 18533
- For Use With:
IQ-X-1000 Pro, IQ-X-2000
- Height: 12.25" - 14.25"
- Arm Length: 13.75"
- Weight: 3.4 lbs.
- Fits Tubing: .788-1" Diameter
- Load Capacity: 50 lbs.



LIMITED LIFETIME WARRANTY
More Detail Visit
ultimatesupport.com

1130 Diamond Valley Drive, Suite A
Windsor, CO 80550
Phone: 1-800-525-5628
Fax: 970.776.1941
Web: www.ultimatesupport.com
R. 3. 07/04/22, 1S-UJ-IQ-X-200