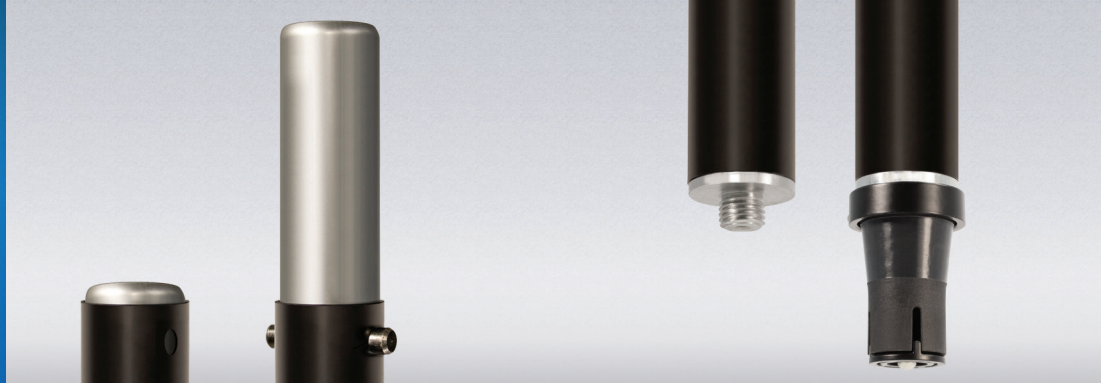


AIR-POWERED SERIES SPEAKER POLE SP-100

The new SP-100 speaker poles feature an expanding cylinder system that will firmly fit multiple speaker sockets from 1- 3/8" to 1-1/2" diameter. Using a 2mm hex wrench, the adapter can also be removed to provide standard M20 threading, allowing your SP-100 speaker pole to be a truly universal solution.



ADJUSTABLE SPEAKER ADAPTER

The top of the speaker pole has an adapter that fits both a 1.5" & 1.375" speaker mount.

UNIVERSAL SUBWOOFER ADAPTER

The bottom of the speaker pole has a universal fit adapter & threaded connector



AIR-POWERED LIFT ASSIST

An air-powered shock helps lift your speaker. The shock can lift 35 lbs. with very little additional assistance required. A die-cast fitting holds the speaker in place and a grip is added to help pull speaker down.

OVER-SIZE TUBING

Our speaker poles are made with over-sized tubing for greater strength and dependability.

SP-100 SPECS

- Part Number: 17654
- Height Range: 37.9" - 59.8"
(964 mm - 1520 mm)
- Upper Tube Size: 1.5" (38.10 mm)
- Lower Tube Size: 1.75" (44.45 mm)
- Weight Rating: 75 lbs. (34.02 kg)
- Weight: 5.7 lbs. (2.58 kg)