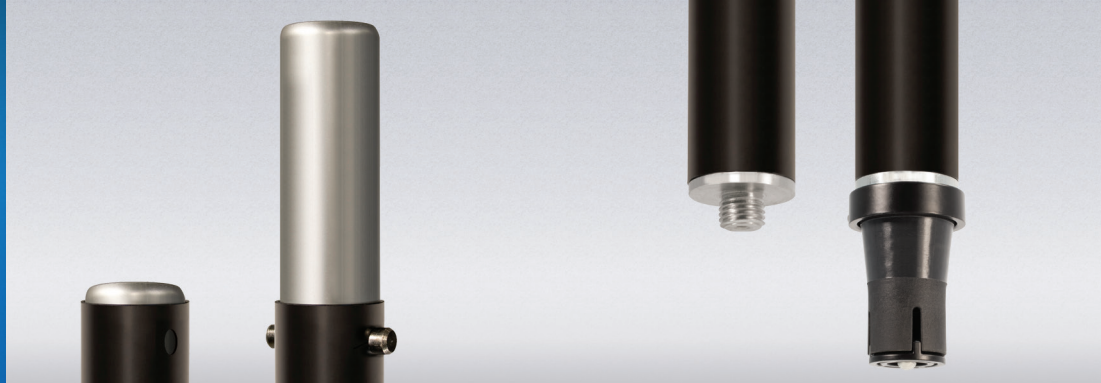


ORIGINAL SERIES SPEAKER POLE SP-80

The new SP-80 speaker poles feature an expanding cylinder system that will firmly fit multiple speaker sockets from 1- 3/8" to 1-1/2" diameter. Using a 2mm hex wrench, the adapter can also be removed to provide standard M20 threading, allowing your SP-80 speaker pole to be a truly universal solution.



ADJUSTABLE SPEAKER ADAPTER

The top of the speaker pole has an adapter that fits both a 1.5" & 1.375" speaker mount.

UNIVERSAL SUBWOOFER ADAPTER

The bottom of the speaker pole has a universal fit adapter & threaded connector



DIE-CAST FITTINGS

Strong die-cast fittings are found throughout the pole and help support key components like the telescoping tube.

OVER-SIZE TUBING

Our speaker poles are made with over-sized tubing for greater strength and dependability.

SP-80 SPECS

- Part Number: 17652
- Height Range: 36.5" - 60" (928 mm - 1520 mm)
- Upper Tube Size: 1.5" (38.10 mm)
- Lower Tube Size: 1.75" (44.45 mm)
- Weight Rating: 75 lbs. (34.02 kg)
- Weight: 3.15 lbs. (1.42 kg)