

Ampeg®

SVT-7PRO

Quick Start Guide

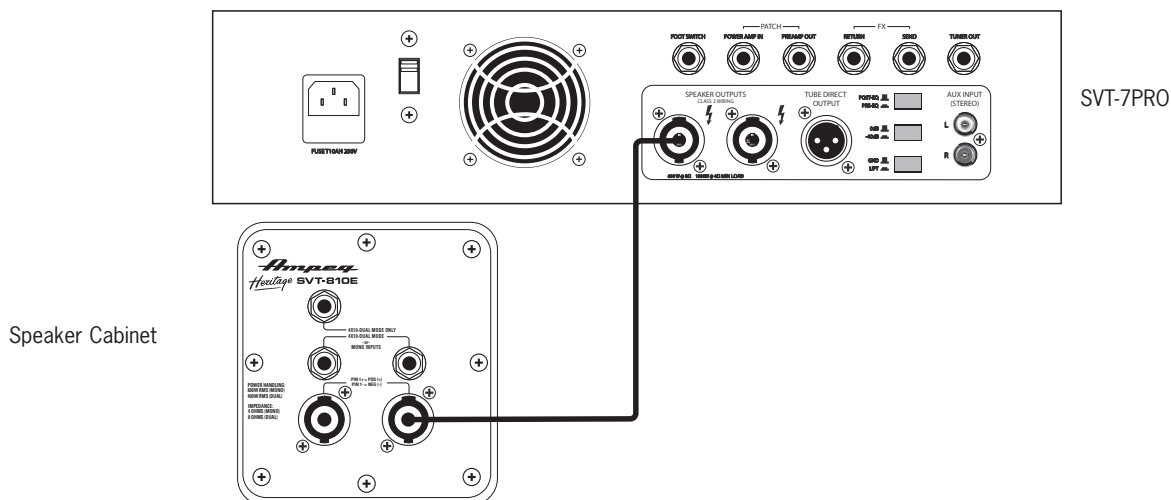


What's in the Box

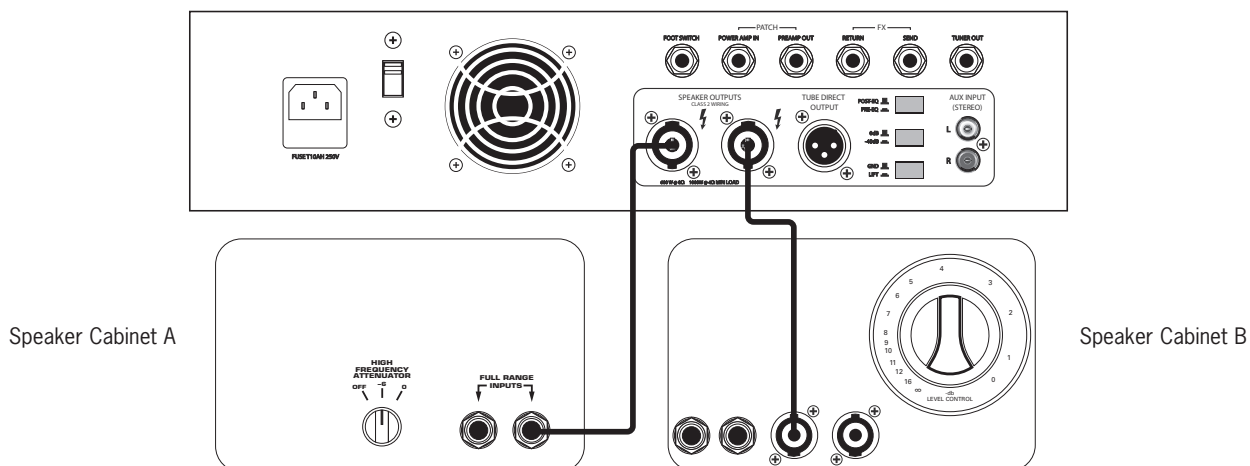
SVT®-7PRO Amplifier, Power Cable, Quick Start Guide.

Hookup Diagrams

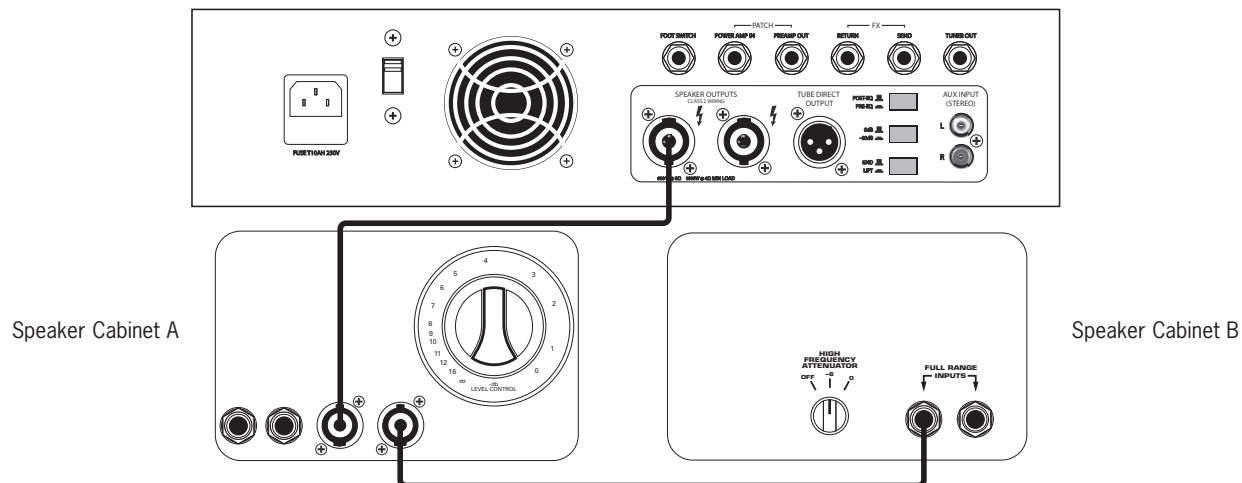
Standard Setup



Parallel Setup

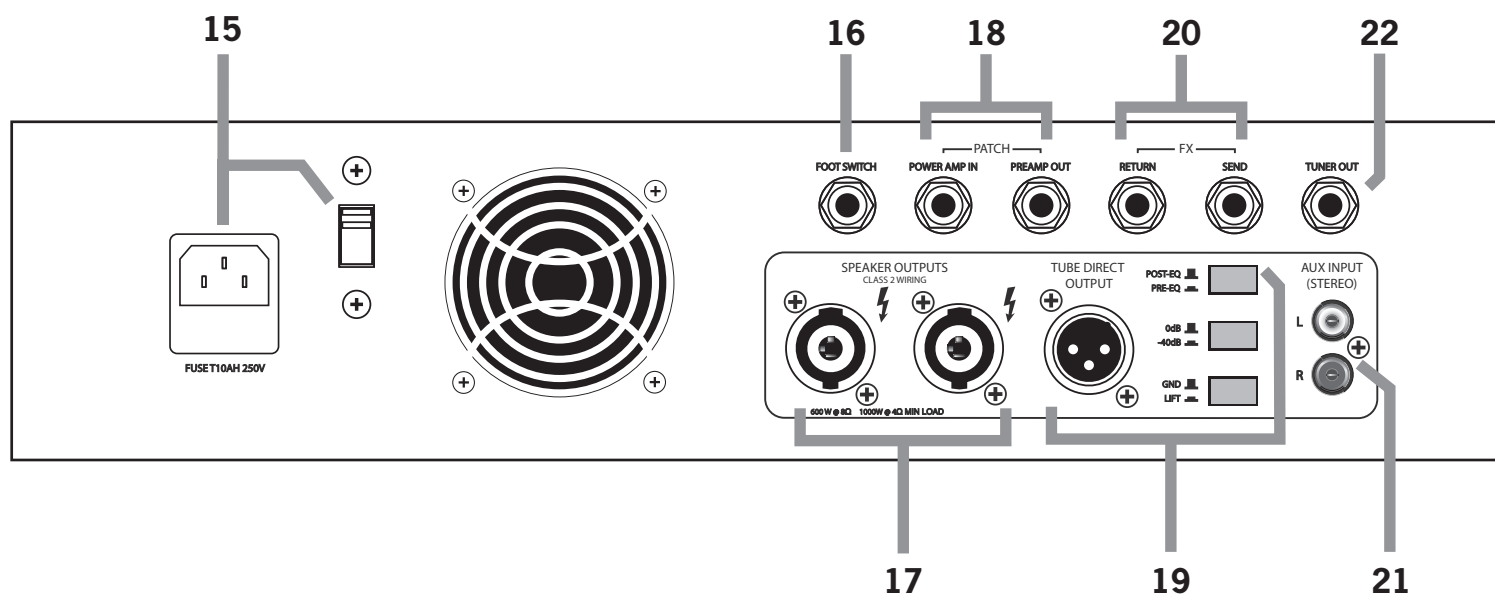
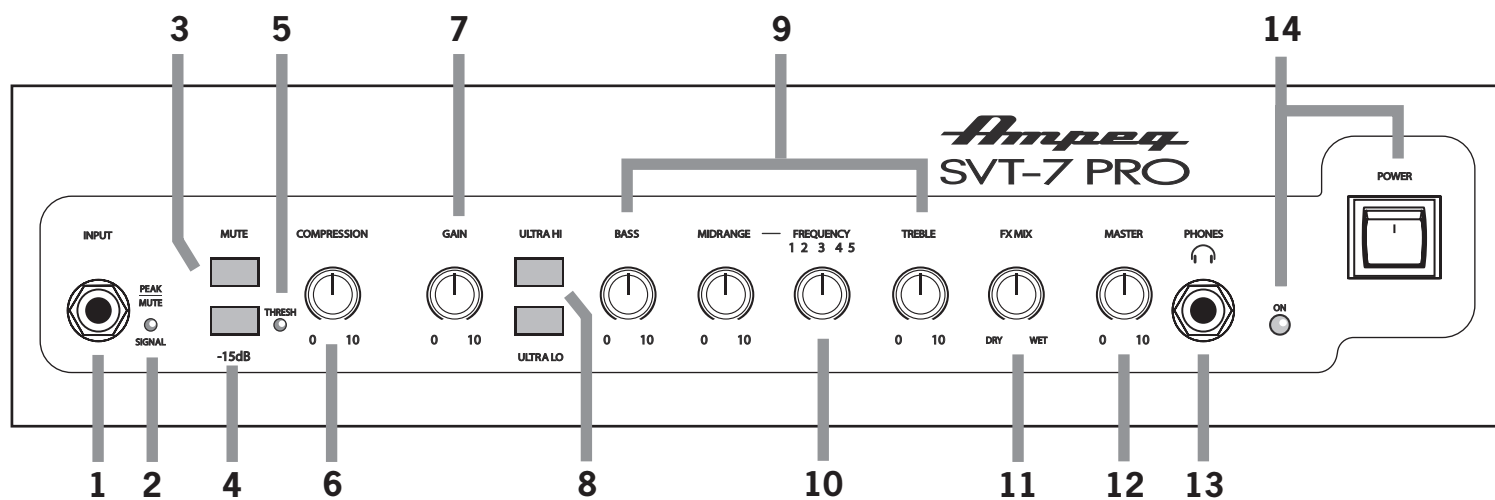


Daisy Chaining



Note: Use same impedance cabinets in parallel setups and when daisy-chaining

Front & Rear Panels



Front & Rear Panel Descriptions

1. **1/4" Inputs:** Connect a passive or active instrument to the input jack.
2. **Peak/Mute LED:** Indicates when the input signal is clipping or when the mute is engaged.
3. **Mute Switch:** Mutes all outputs except for Tuner Output.
4. **Pad:** Reduces input level by 15 dB.
5. **Thresh LED:** Lights when the signal triggers the compressor threshold.
6. **Compression:** Controls the amount of compression applied to the input signal.
7. **Gain Knob:** Varies the intensity of the signal sent to the preamplifier.
8. **Ultra Hi/Ultra Lo Switches:** Boosts high or low frequencies.
9. **EQ Knobs:** Boost or cut the levels at certain frequencies to enhance the sound.
10. **Frequency Select Knob:** Selects the frequencies affected by the Midrange EQ knob.
11. **FX Mix Knob:** Controls the wet/dry signal for the FX Loop.
12. **Master Knob:** Controls the overall speaker output and headphone levels.
13. **Phones Output:** Combination playback of the 1/4" Input and Aux Input.
14. **Power Switch/Power LED:** Turns the power on/off. The LED indicates power on/off.
15. **Power/Voltage Select Switch:** Input socket for power cable and switch for local AC voltage selection.
16. **Foot Switch Input:** Control the Mute and FX functions using a footswitch.
17. **Speaker Outputs:** Speakon® / 1/4" TS outputs for connecting speakers.
18. **Patch Input/Output:** Pwr Amp In bypasses the internal preamp. Pre Amp Out feeds an external amplifier or powered speaker.
19. **Tube Direct Output and Switches:** XLR line level output. Switches to optimize output to a mixer or recorder.
20. **FX Loop Input/Output:** Connect the input and output of a external FX processor.
21. **Aux Input:** Input for an MP3 player or other music source.
22. **Tuner Output:** Feeds an external tuner.

Getting Started

1. Read and understand the included "Important Safety Instructions."
2. Make sure the power switch is off before making any connections.
3. Push the line cord securely into the amplifier's IEC connector and plug the other end into a grounded AC outlet. The amplifier may accept the appropriate voltage, as indicated near the IEC connector.
4. Connect an instrument to the SVT-7PRO Input jack with a 1/4" instrument cable. Connect speaker cables to speaker cabinets with 1/4" TS or Speakon ends, depending on model.
5. With all volume controls fully off, turn the amplifier on by pressing the power switch to the on position.
6. While playing the instrument, adjust the Gain and Master knobs to the preferred level.
7. Adjust the EQ knobs to taste.

Technical Specifications

	SVT-7PRO
Output Power Rating	600W RMS @ 8 Ω (5% THD) 1000W RMS @ 4 Ω (5% THD)
Maximum Gain	72dB
Power Requirements	~100-120V AC, 50-60 Hz, 1050W ~200-240V AC, 50-60 Hz, 1050W
Size (H x W x D)	4.0 x 15.6 x 11.5 in 102 x 369 x 292 mm
Weight	15.5 lb/7.03 kg

All specifications subject to change



WARRANTY AND SUPPORT

Visit **WWW.AMPEG.COM** to...

- (1) ...identify **WARRANTY** coverage provided in your local market. Please keep your sales receipt in a safe place.
- (2) ...retrieve a full-version, printable **OWNER'S MANUAL** (English only) for your product.
- (3) ...**REGISTER** your product.
- (4) ...**CONTACT** Technical Support, or call 818-575-3600.

www.ampeg.com
Yamaha Guitar Group, Inc.
26580 Agoura Road, Calabasas, CA 91302-1921 USA
Part No. 40-00-0529 Rev. B



**Supplier's Declaration of Conformity
47 CFR § 2.1077 Compliance Information**

Unique Identifier: Ampeg SVT-7PRO

Responsible Party - U.S. Contact Information:

Yamaha Guitar Group, Inc.
26580 Agoura Road
Calabasas, CA 91302-1921
(818) 575-3600
<https://ampeg.com/>

FCC Compliance Statement:

This device complies with Part 15 of the FCC Rules. Operation is subject to the following two conditions: (1) This device may not cause harmful interference, and (2) this device must accept any interference received, including interference that may cause undesired operation.

There are various types of fuses, and replacing them with different types may cause malfunction, electric shock, or fire. Be sure to confirm you are replacing the correct fuse with electrical rating and specifications.

Each number and symbol represent the following:

Example: T3AL250V

① T, ② ●A, ③ L, and ④ ■V are shown below.

- ① Symbol indicating relative fusing time / current characteristics T: Time lag type, F: Fast-acting type.
- ② ●A: Rated current
- ③ Symbol indicating the blocking capacity L: Low cutoff capacity, E: Medium cutoff capacity, H: High cutoff capacity.
- ④ ■V: Rated voltage

© 2021 Yamaha Guitar Group, Inc. All rights reserved.

Ampeg and SVT are trademarks or registered trademarks of Yamaha Guitar Group, Inc. in the U.S. and/or other jurisdictions. Speakon is a registered trademark of Neutrik AG Corporation.

Serial No.: _____