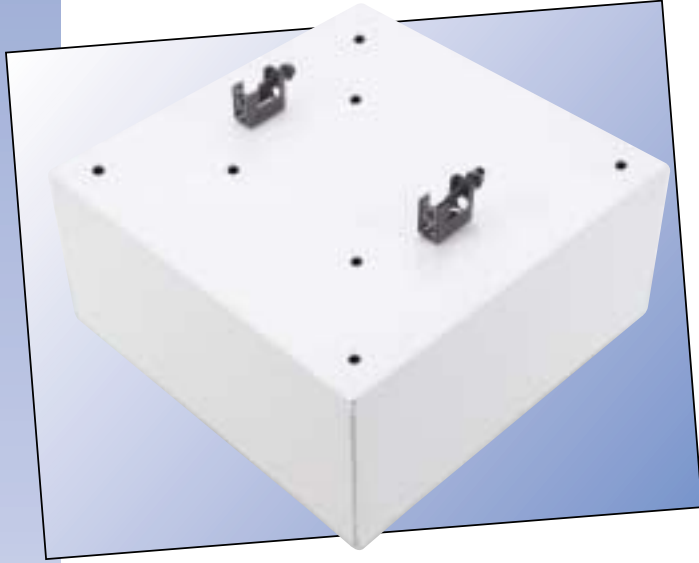




Square Beam Mounting System (SBMS)



SBMS



Screws in UP position

The **SBMS** is ideal for "big box" retail stores whose special design calls for an open beam ceiling. Since the goals are to get customers to pay attention to the announcements of specials and the employees to respond to general paging—intelligibility is a top design goal. The high efficiency of the specially designed 8" speaker included in the **SBMS** package fills this requirement.

Atlas gave the SBMS a square design, which blends in with the overall aesthetic of an open beam ceiling.

The **SBMS** is infinitely flexible, complying with a variety of conduit requirements. Integral knock-outs facilitate 1/2" and 3/4" conduit where required by code while integral "romex" style connector simplifies installation for applications where conduit is not required at all. The **SBMS** also includes a 25V/70.7V internal transformer and is finished in neutral white epoxy for simplified stocking and ordering.

Features

- Easy-to-Install Loudspeaker Package Includes Provisions for Fast Clamp-Mount Installation to I-Beams and Girders
- Package Includes an 8" Dual-Cone Loudspeaker with a Pre-Mounted Transformer, Baffle, and Enclosure Equipped with Clamp Mounts
- Convenient Lead Wire Extensions Assure Expedited Field Connection
- Durable White Powder Coat Finish

SPECIFICATIONS

MODEL	SBMS
SPEAKER	10oz (260g) Dual Cone
TRANSFORMER	70.7/25V
TAPS (Watts)	.5, 1, 2 & 4
ENCLOSURE VOLUME	712 Cubic In.



1601 Jack McKay Blvd.
Ennis, TX 75119
AtlasSound.com
Tech Support 800.876.3333

Printed in the USA
Specifications are subject to change without notice.

©Atlas Sound LP. Atlas Sound is a trademark of Atlas Sound LP. All rights reserved.

484208

000302

ATS001146 RevA 3/02



WR-5AT Loudspeaker



WR-5AT

Applications

Depend on the **WR-5AT** loudspeaker to reproduce natural sound for indoor or outdoor music, paging, and signaling functions. This competitively priced unit is designed for localized area sound distribution wherever a medium power environment resistant loudspeaker is required. Typical applications include refrigerated storage areas, walkways, recreation centers, drive-in service lanes, customer service booths, individual workstations, patios, retail and warehouse areas. Multi-position bracket is provided for installation flexibility to walls, ceilings, pole and light posts.

The **WR-5AT** is equipped with a 70.7 / 25-volt transformer with screwdriver adjustable watts / impedance switch. Transformer taps are provided at .65, 1.25, 2.5, 5. & 7.5 Watts. Housing is constructed of heavy-gauge spun aluminum with phosphate coating and durable light beige epoxy finish.

Features

- Economy Loudspeaker for Paging, Music and Signaling
- Power Handling of 7.5 Watts for Localized or Area Communications
- Delivers Extended Frequency Response for Pleasing Sound Reproduction
- Withstands Indoor and Outdoor Environments

SPECIFICATIONS

MODEL	WR-5AT
RATING	7.5 Watts
NOMINAL FREQUENCY	375 Hz-10 kHz
SOUND LEVEL	
PEAK	111dB
1W/1M[▲]	97dB 400-7800Hz ±5dB
DISPERSION*	95°
XFMR. POWER TAPS	70.7V: 0.65, 1.25, 2.5, 5.0, 7.5
DIMENSIONS	6" Dia. x 4"D

- Angle Shown for -6dB, 2 kHz Octave Band
- ▲ WT-30T measured at lowest tap/1M



1601 Jack McKay Blvd.
Ennis, TX 75119
AtlasSound.com
Tech Support 800.876.3333

Printed in the USA
Specifications are subject to change without notice.

©Atlas Sound LP. Atlas Sound is a trademark of Atlas Sound LP. All rights reserved.

484208

000302

ATS001146 RevA 3/02